

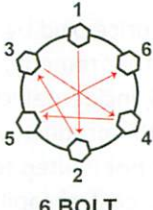
Specifications

Trailer:		
Trailer Length	26' tongue out & 23'3" folded	7.92m / 7.09m
Trailer Width	102"	2.59m
Trailer Height	6'10"	3.30m
Cargo Space	7'6" x 4'8"	2.3m x 1.4m
Cargo Capacity	1,720 lb	780 kg
Trailer Weight	7,080 lb	3,210 kg
Tongue Weight	860 lb	399 kg
Axle Rating	4,400 lb x 2	1,996 kg x 2
Tires	ST225/75D15 LRD	ST225/75D15 LRD
Rim Size	15" x 6" (6 on 5-1/2")	15" x 6" (6 on 5-1/2")
Lug Nut Torque	100 - 120 ft-lb	13.8 – 16.59 m-kg
Recommended Cold Tire Pressure	58 psi	303 kN / m ²
Maximum Rated Trailer Speed	81 mph	130 km/h

Stage Deck:		
Floor Size	20' x 16'	6.10m x 4.88 m
Floor Height	34"	.86m
Ground to Roof	15'8"	4.78m
Structure	3/4" Marine plywood	19mm Marine plywood
Floor Support	(15) 8,000 lb capacity each	(15) 3,629 kg jacks
Scissor Jack	(2) 5,000 lb capacity each	(2) 2,268 kg scissor jacks

Stage Roof:		
Covered Roof	21'5" x 16'	6.5m x 4.9m
Deck to Roof Top	12'9" - (~8'10" Upward Lift)	3.9m - (~2.7m Upward Lift)
Surface	Canvas / Aluminum	Canvas / Aluminum

Other:	
Install Time	45 minutes to 1 hour
Required Personnel	2
Site Preparation	None
Hauling Mode	2-5/16" Ball (Bumper Hitch)
Power Source	12V Deep Cycle Group 24 x 2

<p><u>Wheel Torque Sequence</u></p> <p>1st Stage: 20-25 ft-lbs 2nd Stage: 50-60 ft-lbs Final Torque: 100-120 ft-lbs</p>	 <p style="text-align: center;">6 BOLT</p>
--	---

Limited Warranty:

A. Astra Stages, LLC warrants the following with respect to the product manufactured by or bearing the Astra Stages label: (1) that the product is free from defects in material and workmanship and when used in accordance with the user manual supplied with the product, will operate substantially in accordance with the applicable functional specifications applicable to the product purchased; and (2) that upon payment in full for the product, they will be rendered free and clear of liens, claims or encumbrances of any.

B. The above product warranty shall extend solely to the original end user purchaser of the product for a period of 12 months from the date of shipment from Astra Stages facilities, unless otherwise stated on a formal quotation issued by Astra Stages. With respect to any products sold but not manufactured by Astra Stages or bearing the Astra Stages label, Astra Stages will assign to customer all available manufacturer warranties.

C. Astra Stages sole liability under this warranty shall be (a) either to repair or to replace, at Astra Stages option; the defective product component(s) in accordance with Astra Stages return and repair procedures, or (b) if after repeated efforts Astra Stages is unavailable to resolve the defect by repair or replacement, to refund the purchase price upon return of the defective item. The warranty period for repaired or replaced products shall be the remainder of the original warranty period for the repaired or replaced item. Astra Stages shall incur no obligation under this warranty if (1) the allegedly defective product is returned to ASTRA STAGES more than thirty (30) days after the expiration of the applicable warranty period; (2) if ASTRA STAGES verifiable tests disclose that the alleged defect is not due to defects in material or workmanship; or (3) if, in ASTRA STAGES sole judgment, the product has been subject to misuse or neglect, alteration, improper maintenance or damage due to excessive physical use, heat, or stress. This product warranty is void if the serial number of the product has been defaced, altered or removed.

D. All warranty claims MUST be submitted in writing to receive service. Verbally notifying ASTRA STAGES of a warranty problem does not waive this obligation.

Exclusions:

The warranties set forth above for the products provided hereunder are complete and are in lieu of, and customer hereby waives, all other conditions, representations, and warranties, express or implied by statute, usage, custom of the trade or otherwise, including without limitation, the implied warranties of merchantability and fitness for a particular purpose. Notwithstanding any other or prior statement, written or oral, ASTRA STAGES makes no other warranties regarding the quality of its' product(s) or the materials contemplated hereunder and ASTRA STAGES expressly disclaims any warranties of durability, that the product will meet all of customer's needs or that the operation of the product(s) will be error free.

Limits of Liability:

ASTRA STAGES liability shall be limited to the price paid by customer for the goods, or repair of the goods, and customer shall be entitled to no other remedy, regardless of the form of the claim. ASTRA STAGES shall not be liable for indirect, special, incidental, consequential or punitive damages arising from or relating to the use or inability to use the product, whether or not customer has been advised of the possibility of such damages, including but not limited to loss of profits or revenue, attorney's fees, damage to business, loss of use of equipment, cost of capital, down time costs or damages for delay, or for damages for economic losses or property damage arising from any acts or omissions, whether in negligence, strict liability, or other product liability theories. The limitation of liability and warranty

disclaimers stated in this agreement form an essential basis of the bargain between the parties and apply regardless of whether any limited remedy hereunder fails of its' essential purpose. By installing or using this product, the user accepts all terms described herein.

Law, Jury Waiver:

Customer agreed that this warranty, and all claims related to the manufacture repair of the product shall be governed and construed in accordance with Kansas law. Customer consents to jurisdiction in venue of any state or federal court in Kansas and waives the defense of inconvenient forum. For any action arising out of or relating to this product, repair, or the equipment, YOU WAIVE ALL RIGHTS TO A TRIAL BY JURY.

How to Obtain Service under this Warranty:

If you have problems with your stage, please contact us at (620)-704-9986. However, all warranty claims MUST be submitted in writing to receive service. Notifying Astra Stages, LLC verbally does not constitute a warranty claim.

The user must use one of the following methods:

E-mail at sales@astrastages.com

Mail To:

Astra Stages, LLC
Attn: ASTRA Warranty
3303 Airport Circle
Pittsburg, KS 66762

It is the responsibility of the stage owner to make sure the written warranty claim has been received by Astra Stages, LLC before the end of the warranty period. No service can be performed unless a written claim is received.

ALL repairs must be authorized by Astra Stages, LLC. Any unauthorized repairs could void the warranty.

Requirements:

Return shipping costs to be paid for by the user. The cost of shipping to the manufacturer, or authorized repair center or payment of any customs clearance fees or duties is the responsibility of the user.

CUSTOMER: _____

ORDER NUMBER: _____

SERIAL NUMBER: _____

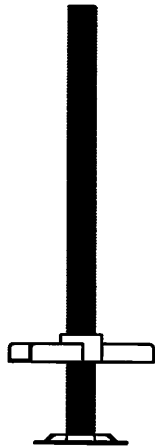
DATE OF PURCHASE: _____



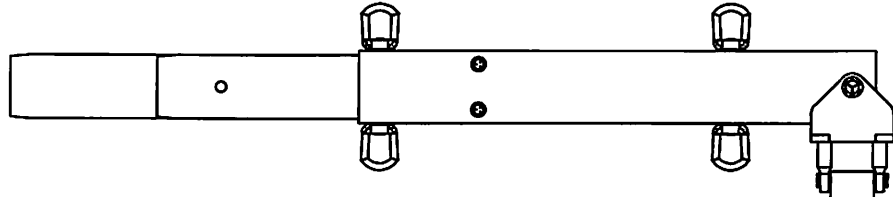
ASTRA FLYBAR KIT

Parts and Assembly Instructions

ASTRA Flybar Kit Parts



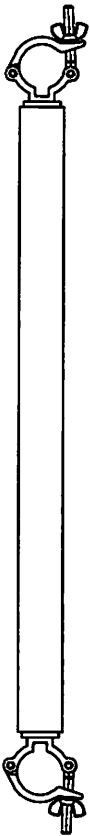
**LEVELING
JACK (2X)**



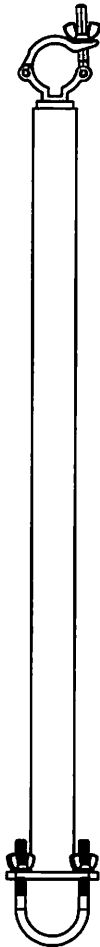
**RIGHT OR LEFT SPEAKER
HANGER ASSEMBLY
MAY REQUIRE SOME
ASSEMBLY (2X)
SEE NEXT SHEET**



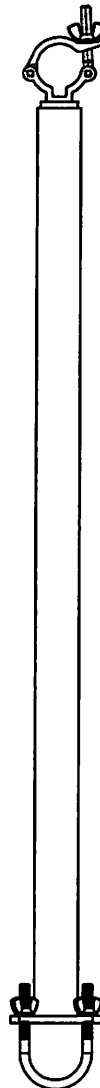
**Ø 1/2" X 3"
CLEVIS PIN
(2X)**



**SHORT SPEAKER
WING SUPPORT
(2X)**



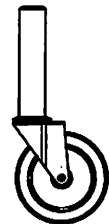
**SPEAKER
WING SUPPORT
(2X)**



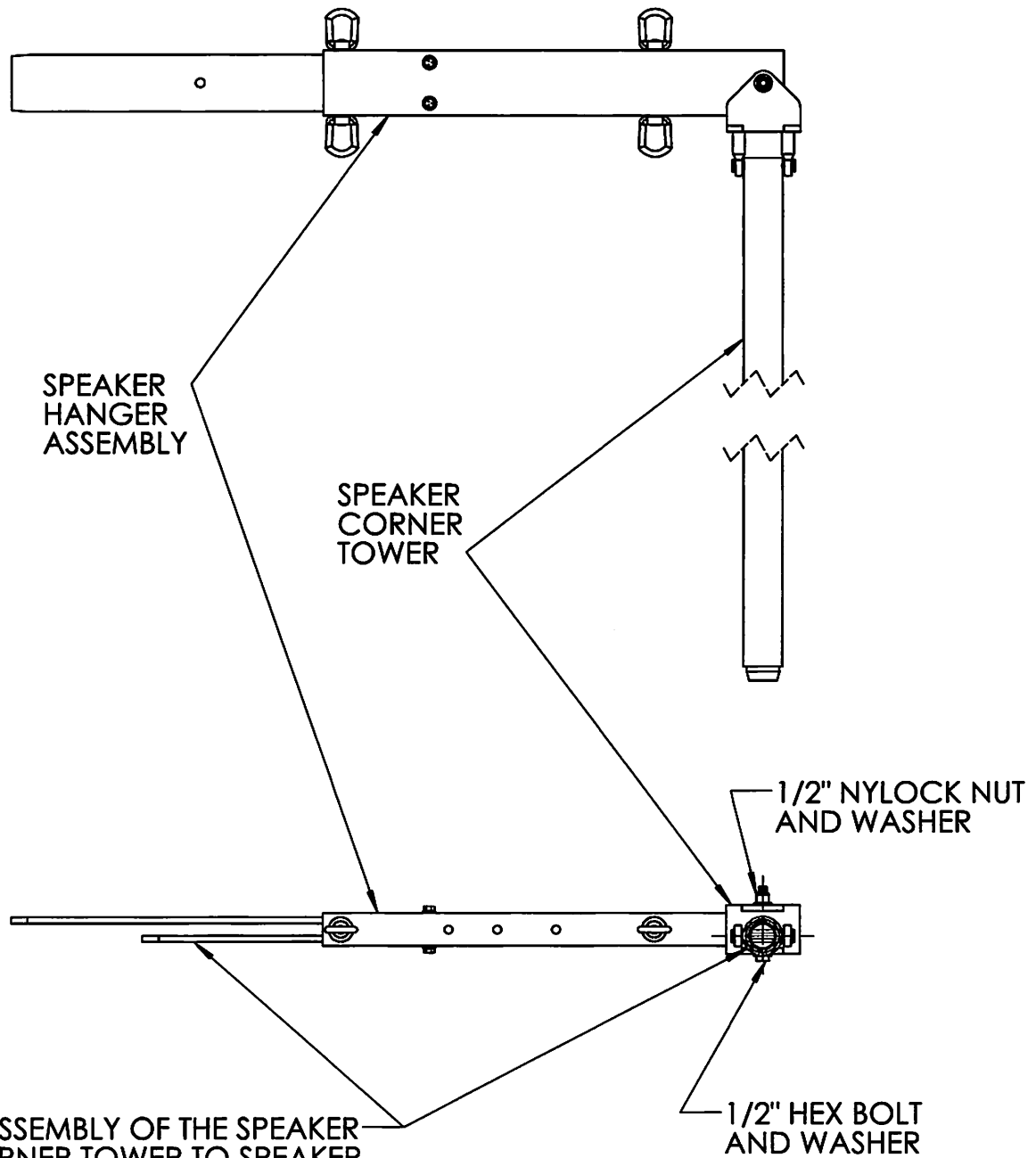
**LONG SPEAKER
WING SUPPORT
(2X)**



**SPEAKER WING
CASTER (2X)**



RIGHT OR LEFT SPEAKER HANGER ASSEMBLY



IF ASSEMBLY OF THE SPEAKER CORNER TOWER TO SPEAKER HANGER ASSEMBLY IS REQUIRED, ORIENT SPEAKER CORNER TOWER AS SHOWN RELATIVE TO THE ITEM INDICATED ON THE SPEAKER HANGER ASSEMBLY.

1.0 - Introduction.

The Flybar Assembly Kit contains the components indicated on the previous page. When added to the ASTRA stage, the Flybar will accommodate a width up to a maximum of 36" between corner towers. The weight capacity is up to 1,500 pounds on each side, single point centered on the 36" width.

Prior to installation of the Flybar Assembly, it will be necessary to determine whether the roof extensions will be positioned in the pitch up or pitch down configuration.

The Flybar Assembly and Stairs can not be on the same side of the stage, i.e., with the flybars at the front of the stage, the stairs can only be placed at the back of the stage.

2.0 - Assembly

Figure 1 shows the "Right or Left Speaker Hanger Assembly" with a short member indicated. If the roof extension will be in the pitch down orientation, the short member should be facing outward from the stage. For the roof extension in the pitch up orientation, the short member would face towards the interior of the stage. Figure 1 also indicates the single point location for the maximum load

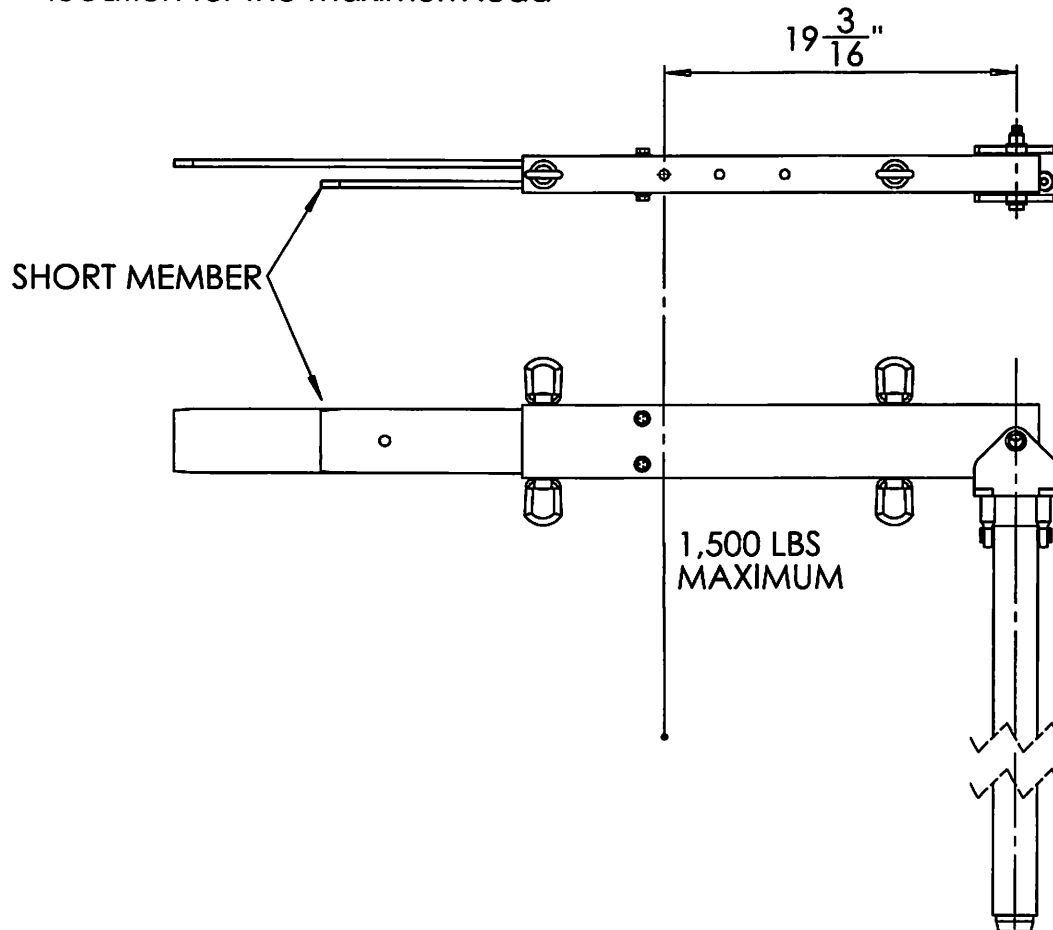


Figure 1 - Right or Left Speaker Hanger Assembly

Figure 2 shows the "Right or Left Speaker Hanger Assembly" installed in the roof extension for the pitch down configuration. The short member in Figure 1 should face outward from the stage (for pitch down). The point at which the speaker hanger assembly is installed is when the stage is level and the floor extensions are in their final position and leveled with all 8k dropleg jacks in place. Refer to the ASTRA Owner's Manual.

Once the "Right or Left Speaker Assembly" is inserted into the roof extension 2" x 4" x 1/4" rectangular tube fully, the $\phi 1/2"$ x 3" clevis pin is inserted to secure the assembly to the roof extension. If your ASTRA stage does not have a hole in the roof extension 2" x 4" x 1/4" rectangular tube, please refer to Figure 5 on the last page for details on size and placement.

The "Speaker Wing Caster" slides into the end of the tube as indicated only while raising or lowering the roof to prevent damage to the end of the tube. The speaker wing caster is not part of the final assembly when done and should be stored.

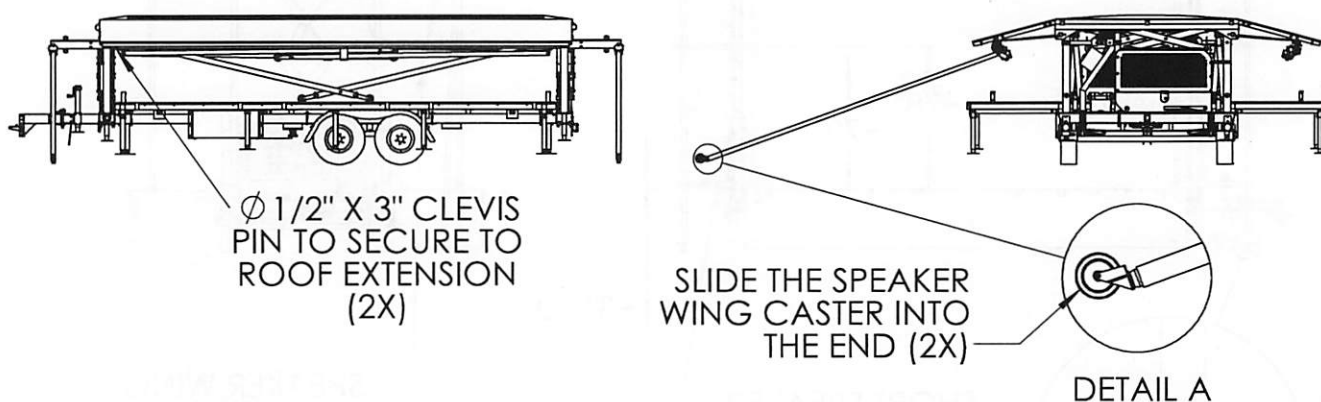


Figure 2 - Right or Left Speaker Hanger Assembly Installation

Once all stage corner towers have been removed from hangers and placed on the stage floor, raise the roof, secure the main roof corner towers first, followed by the roof extension corner towers as outlined in the ASTRA Owner's Manual remembering that the roof corner towers with the speaker wing assembly should be located for the pitch down configuration.

Note: If the speaker hanger assembly is installed in the roof extension for the pitch down configuration, but the roof extension corner towers are connected to the hole for the pitch up configuration, the outcome will be an offset between the stage corner tower and the corresponding pipe on the speaker wing assembly.

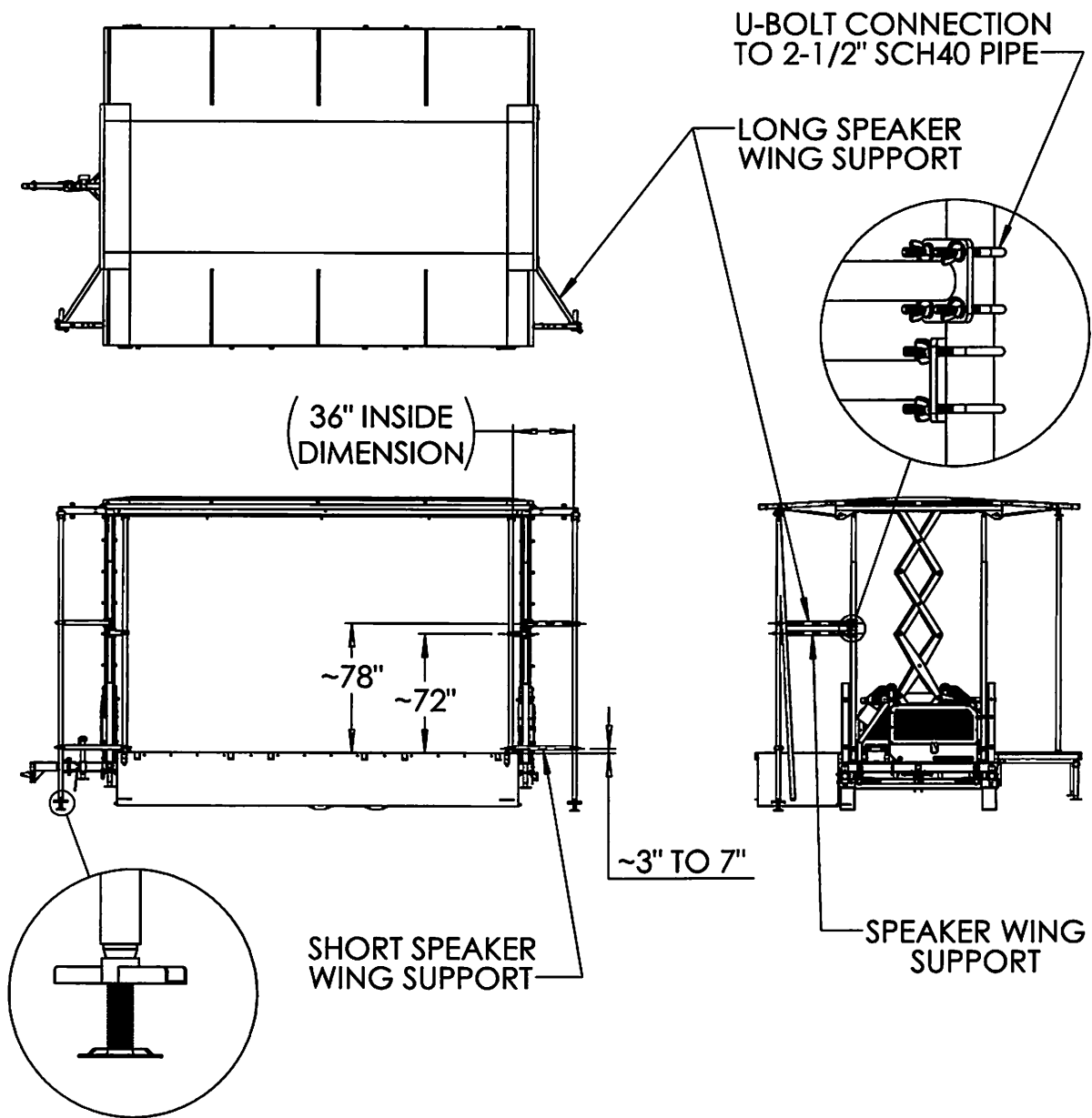


Figure 3 - Final Assembly

The final assembly shown in Figure 3 consist of removing the speaker wing caster, and replacing it with the leveling jack (same on both sides). The short speaker wing supports, speaker wing supports and long speaker wing supports are all installed as shown at the approximate dimensions as indicated. The leveling jack should be adjusted to take up any play between it and the speaker wing hanger tube.

The eye bolts are installed on the speaker wing hanger based on a 30" width, but may be relocated for up to a 36" width as shown in Figure 4.

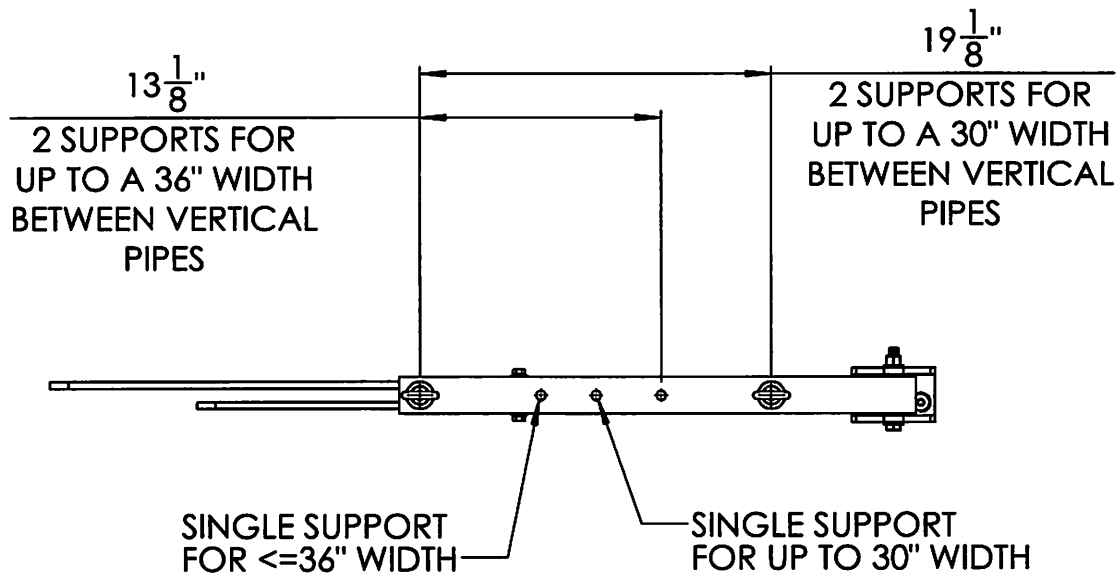


Figure 4 - SPEAKER HANGER SUPPORT LOCATIONS

The rating on each eyenut is 2,150 pounds, so one should support the single point maximum weight of 1,500 pounds.

Note: If your ASTRA stage does not have the hole in the roof extension 2" x 4" x 1/4" rectangular tube, Figure 5 below gives the details for the size and placement. This will require drilling a total of 4 thru holes in the roof extensions.

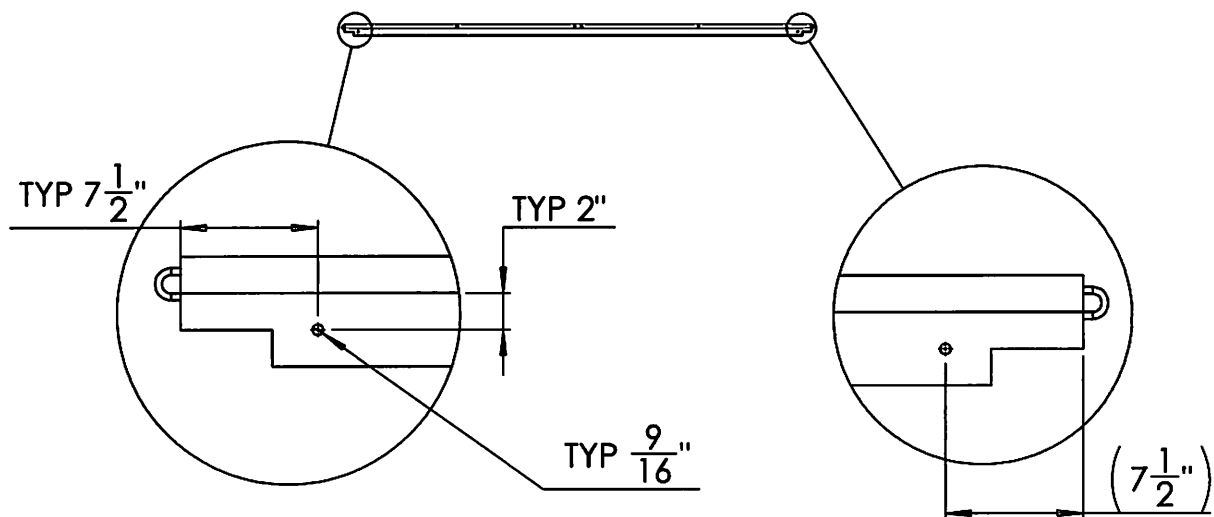


Figure 5 - Hole Locations in Roof Extensions for Clevis Pin

