

**Stagemobil®**

**KARL ECKART**

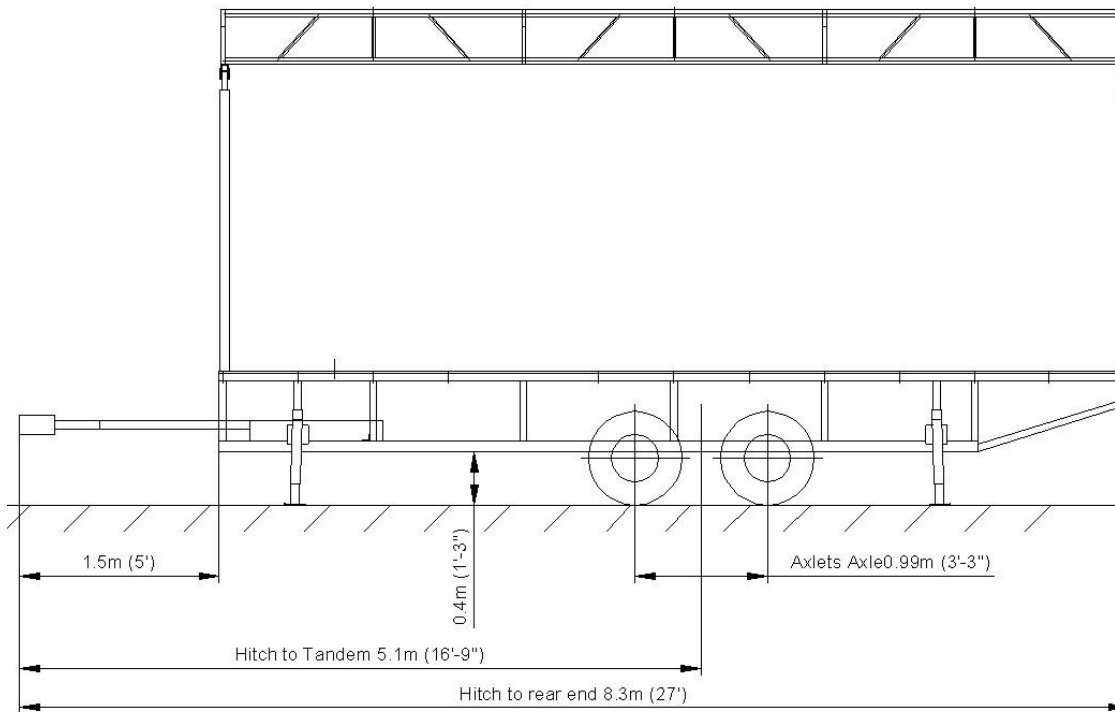
FAHRZEUGBAU GmbH

Tel. 05675/350 – Fax 05675/5340

Bremer Landstraße 25

34369 Hofgeismar/Hümme

**Mass and Dimensions – Stagemobil L**



Note  
1. Mass may vary depending of options.

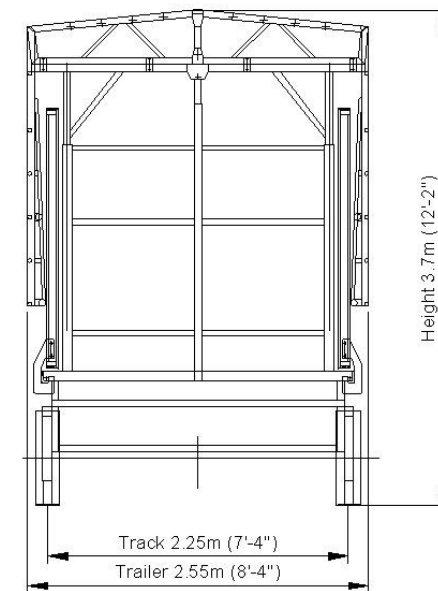
**Mass**

**kg**

**Lbs**

Vehicle Mass	3500	7720
Net weight	2510	5520
Allowable Load on Axle	1750	3850

Standard: 2 axles



Stage specifications subject  
To change without notice  
Figures are within inch or  
cm to actual size

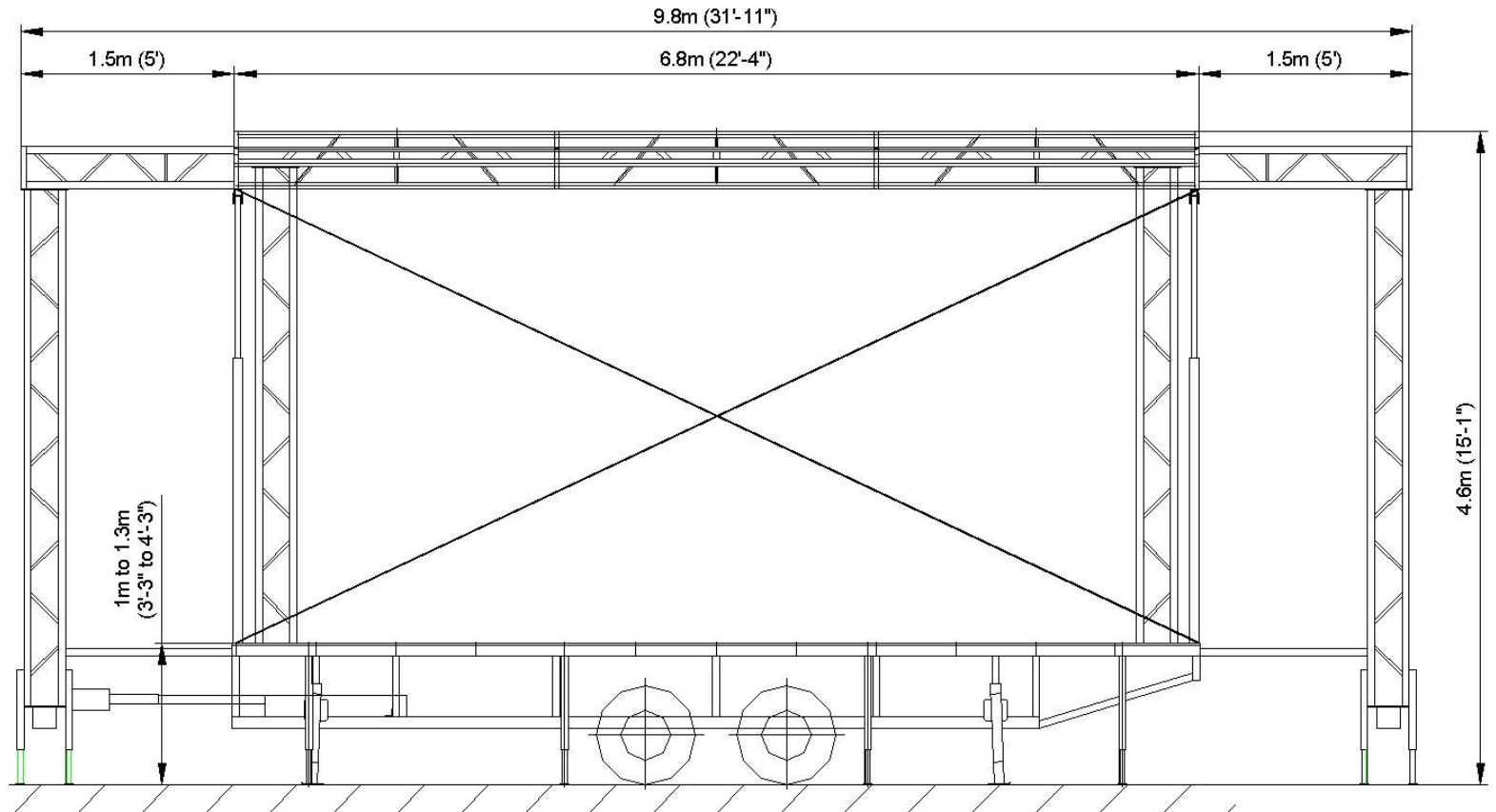
©2008 – Allrights reserved, Karl Eckart Fahrzeugbeu GmbH. Any and all forms of adaption or reproduction of this document including plans and drawings found herein, in whole or in part, are strictly forbidden without the written authorisation of Karl Eckart Fahrzeugbau GmbH.

Date: 2008-02-05  
Revision 0

**Stagemobil®**  
**KARL ECKART**

FAHRZEUGBAU GmbH  
Tel. 05675/350 – Fax 05675/5340  
Bremer Landstraße 25  
34369 Hofgeismar/Hümme

**Stagemobil L**



**Front View**

Stage specifications subject  
To change without notice  
Figures are within inch or  
cm to actual size

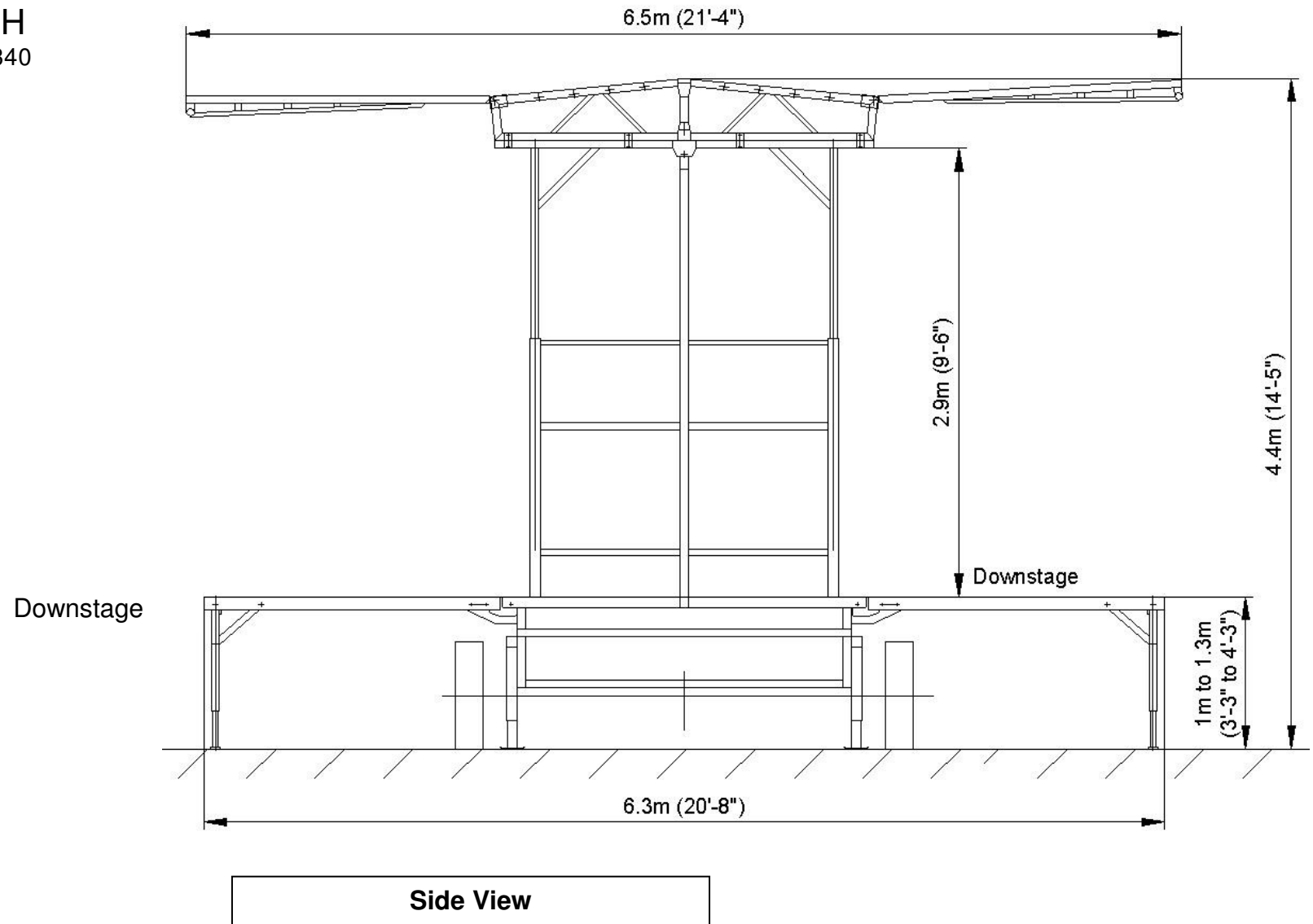
©2008 – Allrights reserved, Karl Eckart Fahrzeugbeu GmbH. Any and all forms of adaption or reproduction of this document including plans and drawings found herein, in whole or in part, are strictly forbidden without the written authorisation of Karl Eckart Fahrzeugbau GmbH.

Date: 2008-02-05  
Revision 0

**Stagemobil®**  
**KARL ECKART**

FAHRZEUGBAU GmbH  
Tel. 05675/350 – Fax 05675/5340  
Bremer Landstraße 25  
34369 Hofgeismar/Hümme

**Stagemobil L**



Stage specifications subject  
To change without notice  
Figures are within inch or  
cm to actual size

©2008 – Allrights reserved, Karl Eckart Fahrzeugbeu GmbH. Any and all forms of adaption or reproduction of this document including plans and drawings found herein, in whole or in part, are strictly forbidden without the written authorisation of Karl Eckart Fahrzeugbau GmbH.

Date: 2008-02-05  
Revision 0

**Stagemobil®**

**KARL ECKART**

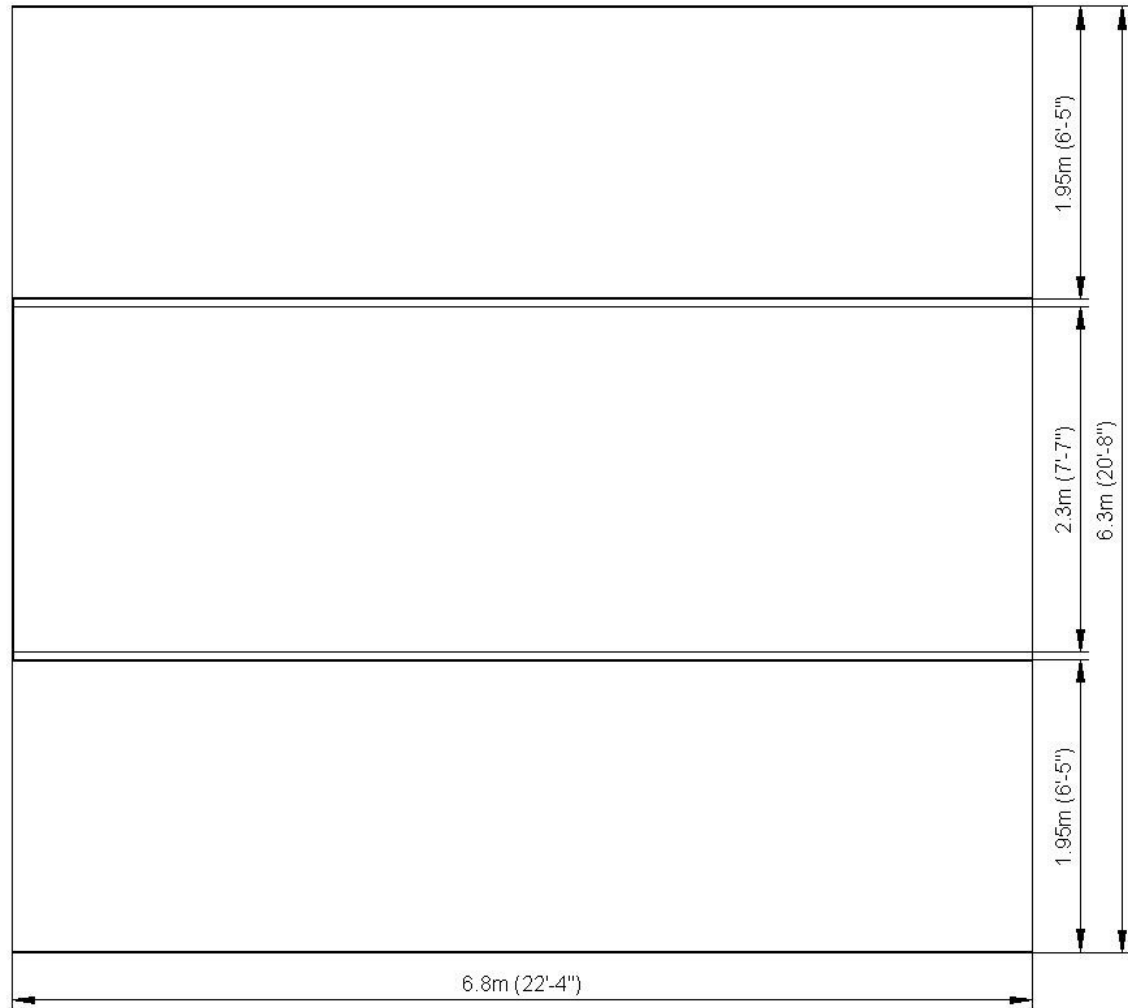
FAHRZEUGBAU GmbH

Tel. 05675/350 – Fax 05675/5340

Bremer Landstraße 25

34369 Hofgeismar/Hümme

**Stagemobil L**



Downstage

Capacity: 100 lbs/ft<sup>2</sup> (5 kN/m<sup>2</sup>)

**Floor View**

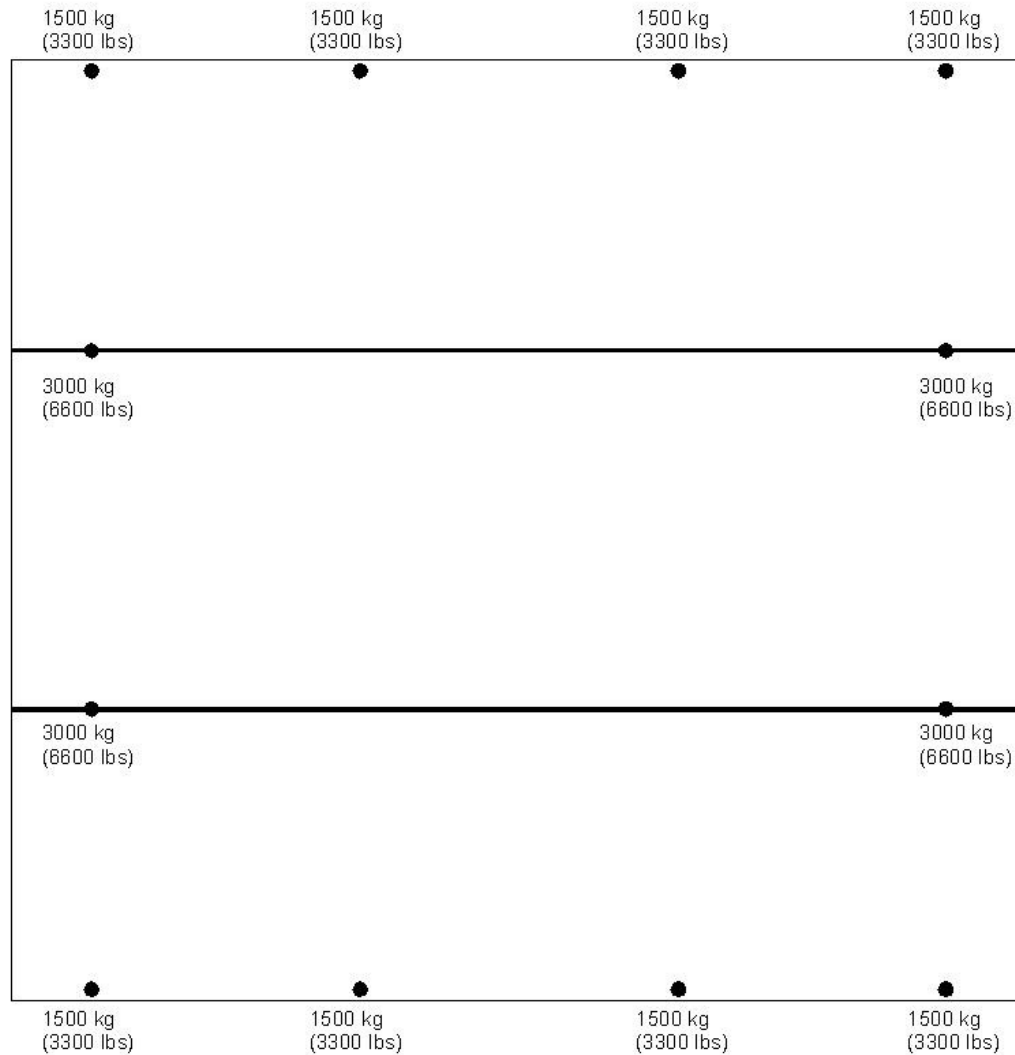
Stage specifications subject  
To change without notice  
Figures are within inch or  
cm to actual size

©2008 – Allrights reserved, Karl Eckart Fahrzeugbeu GmbH. Any and all forms of adaption or reproduction of this document including plans and drawings found herein, in whole or in part, are strictly forbidden without the written authorisation of Karl Eckart Fahrzeugbau GmbH.

Date: 2008-02-05  
Revision 0

**Stagemobil®**  
**KARL ECKART**  
 FAHRZEUGBAU GmbH  
 Tel. 05675/350 – Fax 05675/5340  
 Bremer Landstraße 25  
 34369 Hofgeismar/Hümme

**Stagemobil L**



Downstage

● Floor stabilizers, extensions and leveling jacks.  
 \*Nominal specifications subject to change with notice.

**Ground Support Capacity**

Stage specifications subject  
 To change without notice  
 Figures are within inch or  
 cm to actual size

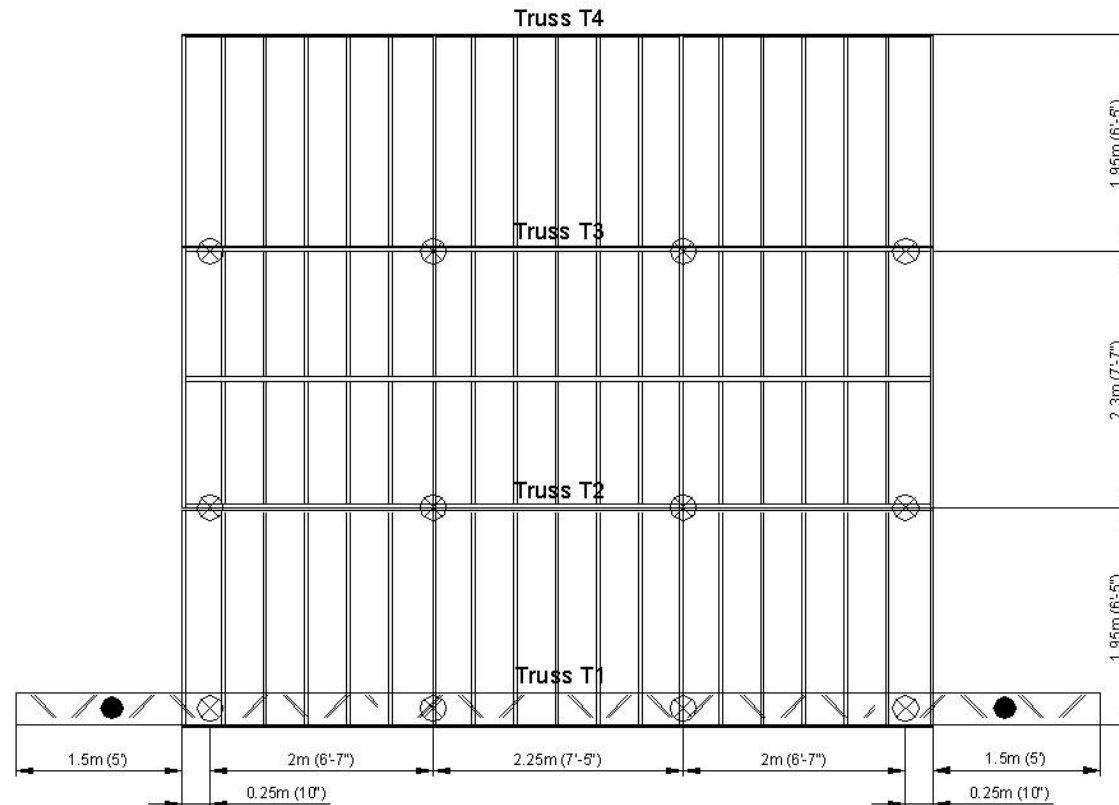
**Stagemobil®**  
**KARL ECKART**  
 FAHRZEUGBAU GmbH  
 Tel. 05675/350 – Fax 05675/5340  
 Bremer Landstraße 25  
 34369 Hofgeismar/Hümme

## Stagemobil L

### LOAD BEARING TRUSSES



Total Maximum 200 kg (440 lbs)  
 RIGGING PATTERNS  
 T1-T4: USE P1 or P2



**Maximum load bearing capacity of all 4 bearing trusses 800 kg (1760 lbs)**

Downstage

● Rigging point maximum capacity: 350 kg (770 lbs)

⊗ Rigging point maximum capacity: 50 kg (110 lbs)

All loads should be evenly distributed.

Stage specifications subject  
 To change without notice  
 Figures are within inch or

**Rigging Plan**